

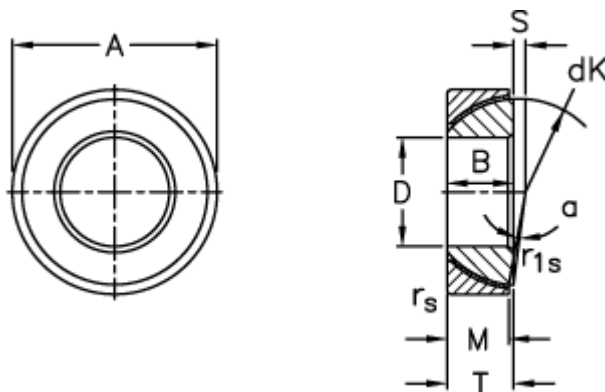
Data Sheet



Article number: 03510160

Description: Fluro Rod end GE 160SW

Measures



A = 240 0 -0,030

B = 51

D = 160 0 -0,025

dK = 225

Dynamic load C (kN) = 1750

M = 49

rs, r1s min = 3

S = 20

Static load C0 (kN) = 3500

T = 51 +0,35 -0,70

Tilt angle = 1

Weight = 9420